

2026 PAINT, FABRIC AND WHEEL GUIDE





Grand Caravan
Page 3



**Pacifica/
Pacifica Hybrid**
Pages 4 – 5



Durango
Pages 6 – 7



Charger
Pages 8 – 9



Compass
Pages 10 – 11



Gladiator
Pages 12 – 13



Wrangler
Pages 14 – 15



**Grand Cherokee/
Grand Cherokee L**
Pages 16 – 17



Grand Wagoneer
Pages 18 – 19



Wagoneer S
Pages 20 – 21



1500
Pages 22 – 23



2500/3500
Pages 24 – 25



**3500/4500/5500
Chassis Cab**
Pages 26 – 27



ProMaster
Pages 28 – 29



500e
Pages 30 – 31

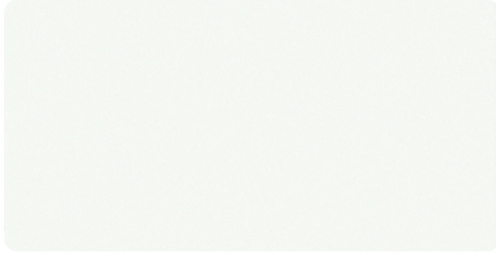
Properly secure all cargo.
Always tow within the vehicle's capacity.

CHRYSLER GRAND CARAVAN



PAINTS[†]

[†]Selections may not be available on all trim levels/models and may be limited/restricted based on availability.



Bright White (PW7)



Red Hot (PR6)



Diamond Black Crystal Pearl (PXJ)



Silver Mist (PSE)

FABRIC



Caprice leatherette — Black
Standard on SXT

WHEEL



17-inch Technical Silver aluminum
Standard on SXT
(WFN)



CHRYSLER
PACIFICA /
PACIFICA HYBRID

PAINTS[†]

[†]Selections may not be available on all trim levels/models and may be limited/restricted based on availability.



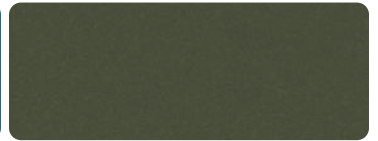
Red Hot (PR6)



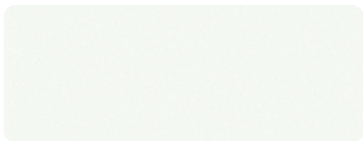
Diamond Black Crystal Pearl (PXJ)



Hydro Blue Pearl (PBJ)



Olive Green (PFG)



Bright White (PW7)



Silver Mist (PSE)

FABRICS



Caprice leatherette — Black
Standard on Select FWD/AWD
and Select Hybrid



**Caprice leatherette — Black
with embroidered S logo**
Available on Select FWD/AWD
and with S Appearance Package



**Nappa leather-faced — Black
with Light Diesel Grey stitching
and Light Diesel Grey piping**
Standard on Limited FWD/AWD



**Nappa leather-faced with perforated
inserts — Black with Light Diesel
Grey accent piping and stitching
and embroidered S logo**
Available on Limited FWD/AWD
and Select Hybrid with
Limited S Appearance Package



**Premium quilted Nappa leather-faced
with Axis II perforated inserts — Sepia
with Light Grey accent stitching and
Sydney Grey piping**
Standard on Pinnacle™



CHRYSLER PACIFICA/PACIFICA HYBRID WHEELS



**17-inch Diamond-Cut aluminum
with Grey pockets**
Standard on Select FWD
(WFN)



18-inch polished aluminum
Standard on Select AWD
and Limited FWD/AWD
(WBS)



20-inch Foreshadow aluminum
Available on Select and
Limited FWD/AWD with
S Appearance Package
(WPF)



**20-inch polished aluminum
with Grey pockets**
Standard on Pinnacle™ AWD
(WH5)



**17-inch Diamond-Cut aluminum
with Grey pockets**
Standard on Select Hybrid
(WJR)



18-inch Foreshadow aluminum
Available on Limited Hybrid with
S Appearance Package
(WP6)



**18-inch polished aluminum
with Grey pockets**
Standard on Pinnacle Hybrid
(WDP)

DODGE
DURANGO

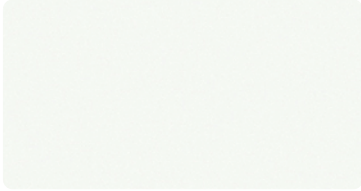


PAINTS[†]

[†]Selections may not be available on all trim levels/models and may be limited/restricted based on availability.



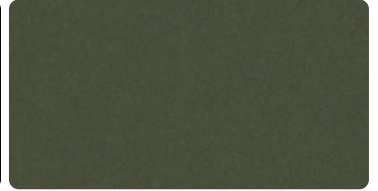
Destroyer Grey (PDN)



White Knuckle (PW7)



DB Black (PXJ)



Mean Machine (PFP)



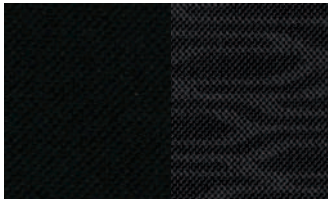
B5 Blue (PQD)



Vapour Grey (PAS)



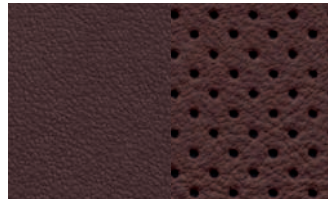
Octane Red (PRV)



Cloth — Black
Standard on GT



Nappa leather-faced with perforated inserts — Black with embossed Dodge Rhombus logo and Tungsten accent stitching
Available on GT and GT HEMI[®] V8



Nappa leather-faced with perforated inserts — Black/Ebony Red with embossed Dodge Rhombus logo and Black accent stitching
Available on GT and GT HEMI V8



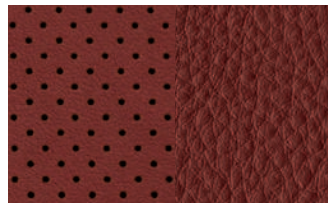
Nappa leather-faced with perforated suede inserts — Black with Silver accent stitching
Available on SRT Hellcat[®] Jailbreak



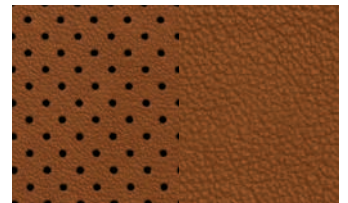
Nappa leather-faced with SRT Hellcat embroidered logo — Black/Ebony Red
Available on SRT Hellcat Jailbreak



Suede and Nappa leather-faced — Black
Available on SRT Hellcat Jailbreak



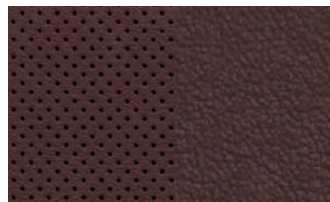
Laguna leather-faced — Demonic Red
Available on SRT Hellcat Jailbreak



Laguna leather-faced — Sepia
Available on SRT Hellcat Jailbreak



Laguna leather-faced — Hammerhead Grey
Available on SRT Hellcat Jailbreak



Nappa leather-faced — Black/Ebony Red
Available on SRT Hellcat Jailbreak



DODGE DURANGO WHEELS



18-inch painted aluminum
Standard on SXT
(WP1)



20-inch Fine Silver aluminum
Standard on GT
(WHJ)



20-inch Black Noise aluminum
Included on GT
with Blacktop Package
(WH4)



20-inch painted Satin Carbon aluminum
Included on GT HEMI® with
Tow 'N Go Package
Available on SRT Hellcat® Jailbreak
(WP8)



20-inch SRT Hellcat Brass Monkey aluminum
Available on SRT Hellcat Jailbreak
(WSG)



20-inch forged Y-spoke Brass Monkey aluminum
Available on SRT Hellcat Jailbreak
(WSH)



20-inch Satin Carbon split 5-spoke aluminum
Standard on GT HEMI
(WSK)



20-inch Satin Carbon split 5-spoke aluminum
Standard on GT HEMI with Blacktop
Package or Blacktop Redline Package
(WST)



20-inch forged Y-spoke Satin Black aluminum
Standard on GT HEMI with Tow 'N Go
Package and Blacktop Package or
Blacktop Redline Package;
Available on SRT Hellcat Jailbreak
(WSL)



20-inch Lights Out aluminum
Available on SRT Hellcat Jailbreak
(WHE)



20-inch machined-face aluminum with Dark pockets
Standard on SRT Hellcat and
SRT Hellcat Jailbreak
(WHG)

DODGE CHARGER

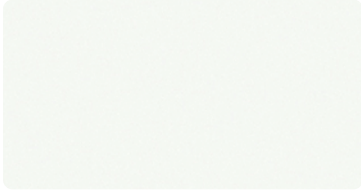


PAINTS[†]

[†]Selections may not be available on all trim levels/models and may be limited/restricted based on availability. [‡]Limited availability.



Destroyer Grey[‡] (PDN)



White Knuckle (PW7)



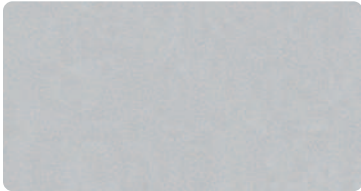
Diamond Black (PXJ)



After Dark (PPS)



Bludicrous (PB1)



Triple Nickel (PSE)



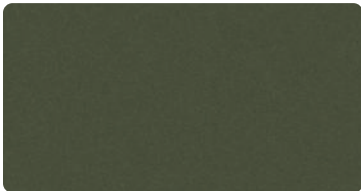
Peel Out[‡] (PL4)



Redeye (PR6)



Steel Blue (PB5)

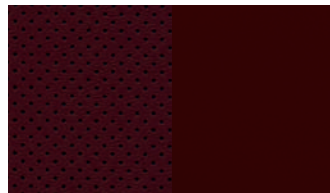


Green Machine (PFP)

FABRICS



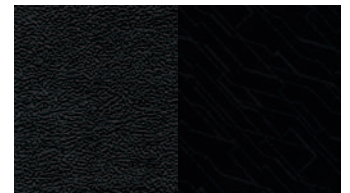
Leatherette bolsters with Rift fabric inserts — Black with Header Red/Silver accent stitching
Standard on Scat Pack and Daytona R/T



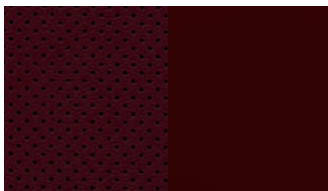
Capri leatherette with Axis II perforated inserts — Demonic Red/Header Red with Silver accent stitching
Available on Scat Pack and Daytona R/T with Plus Group



Capri leatherette with Axis II perforated inserts — Black with Silver accent stitching
Available with Plus Group



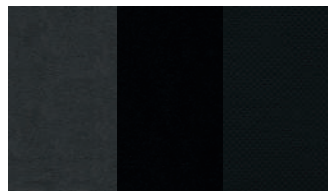
Capri leatherette bolsters with Rift fabric inserts — Black with Header Red/Silver accent stitching
Standard on Scat Pack



Capri leatherette with Axis II perforated inserts — Black or Demonic Red/Header Red with Silver accent stitching
Available with Plus Group and R/T



Capri leatherette with suede perforated inserts — Black or Demonic Red/Header Red with Silver accent stitching
Available with Track Pack



Nappa leather bolster, suede inner bolster and Live Wire embossment with Axis II suede inserts — Black or Demonic Red/Header Red with Header Red and Silver accent stitching
Available with Carbon and Suede Package



Cloth with Rift fabric inserts — Black with Header Red/Silver accent stitching
Standard on R/T



DODGE CHARGER WHEELS



18-inch Tech Silver aluminum
Standard on R/T and Daytona
with R/T Package
(WBD)



**20-inch Diamond-Cut
Baltic Grey aluminum**
Available on R/T and Daytona R/T
with Plus Group
(WRT)



20-inch Black Noise aluminum
Available on R/T and Daytona R/T
with Blacktop Package
(WRN)



20-inch Black Noise aluminum
Available on R/T, Scat Pack and
Daytona R/T with Blacktop Package
(Plus Group is required when selected
on Daytona R/T)
(WRS)



20-inch Satin Carbon aluminum
Standard on Daytona with Scat Pack;
Available on R/T with Track Pack
(WS5)



20-inch Satin Carbon aluminum
Available on Scat Pack and Daytona
Scat Pack with Track Pack
(WC1)



20-inch Luster Grey aluminum
Available on Scat Pack with Blacktop
Package and Track Pack; Available on
Daytona Scat Pack with Track Pack
and Carbon and Suede Package
(WC5)



**20-inch Diamond-Cut
Luster Grey aluminum**
Standard on Scat Pack; Available on
R/T with Track Pack
(WSL)

JEEP[®]
COMPASS

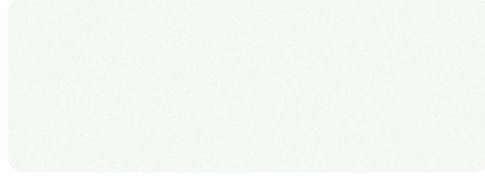


PAINTS[†]

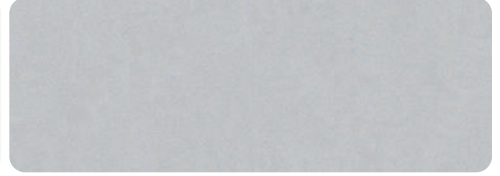
[†]Selections may not be available on all trim levels/models and may be limited/restricted based on availability.



Diamond Black Crystal Pearl (PXJ)



Bright White (PW7)



Silver Zynith (PSE)



Red Hot (PR6)

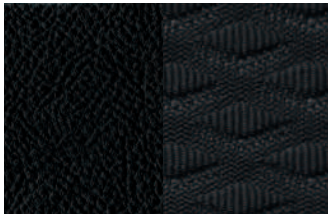


Laser Blue Pearl (PBJ)

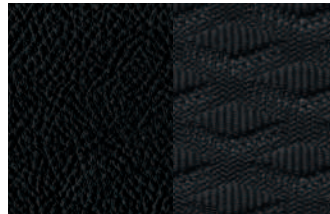


Joose (PL4)

FABRICS



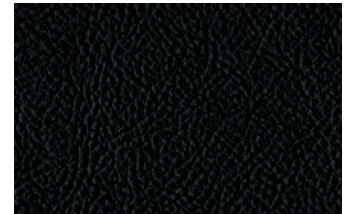
Sedoso and Kimberlite cloth — Black with Bright Blue accent stitching and Steel Grey Blend Dash Mid-Panel
Standard on Sport



McKinley vinyl and Kimberlite cloth — Black with Bright Blue accent stitching and Steel Grey Blend Dash Mid-Panel
Standard on North



McKinley leather-faced and Spectre cloth — Black with Ruby Red and Diesel dual accent stitching and embroidered Trailhawk[®] logo with Black Addax Dash Mid-Panel
Standard on Trailhawk



McKinley leather-faced — Black with Black Addax Dash Mid-Panel
Standard on Limited



JEEP® COMPASS WHEELS



**17-inch Fine
Silver-painted aluminum**
Standard on Sport and North
(WAJ)



**18-inch Gloss
Black-painted aluminum**
Standard with Altitude Special Edition
(WBA)



**17-inch Diamond-Cut aluminum
with Satin Black pockets**
Standard on Trailhawk®
(WD4)



**19-inch Satin Granite
Crystal-painted aluminum**
Standard with Limited
(WS6)

JEEP®
GLADIATOR



PAINTS†

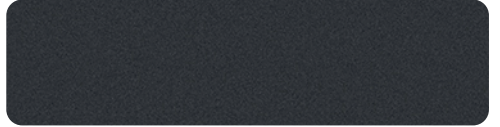
†Selections may not be available on all trim levels/models and may be limited/restricted based on availability. †Late availability.



Anvil (PDS)



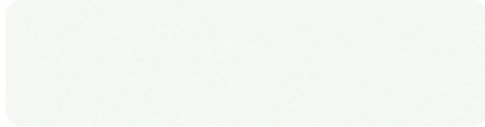
Firecracker Red (PRC)



Granite Crystal Metallic (PAU)



Hydro Blue Pearl (PBJ)



Bright White (PW7)



'41 (PJ5)



Black (PX8)

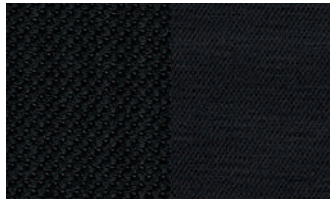


Mojito!† (PGE)



Reign (PHT)

FABRICS



**Soulmate cloth — Black with
Ski Grey Dash Mid-Panel**
Standard on Sport S and Willys



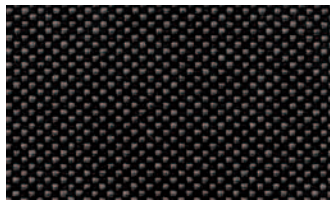
**Premium McKinley
leather-faced — Black**
Available on Sport S with
Premium Package



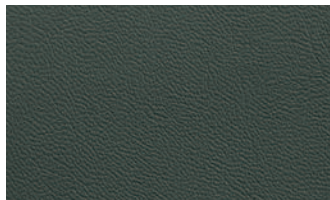
**Soulmate cloth — Black
with Black wrapped Dash Mid-Panel
and embroidered Rubicon® logo**
Standard on Rubicon



**Nappa leather-faced — Black with
Black wrapped Dash Mid-Panel and
embroidered Rubicon logo**
Available on Rubicon



**Ferndale premium cloth — Black
Sport bolster with Black wrapped
Dash Mid-Panel and embroidered
Mojave logo**
Standard on Mojave



**Nappa leather-faced — Mantis Green
with Mantis Green PUR Dash
Mid-Panel and embroidered
Mojave logo**
Available on Mojave



JEEP® GLADIATOR
WHEELS



17-inch Grey aluminum
Standard on Sport S
(WFD)



**17-inch aluminum with
Black pockets**
Available on Sport S
(WFH)



**18-inch Technical Grey
machined-face aluminum**
Available on Sahara®
(WPD)



**17-inch machined-face aluminum
with Black pockets**
Available on Rubicon®
(WFE)



**17-inch Black-painted
machined-face aluminum**
Standard on Rubicon
(WVJ)



17-inch Dark Grey-painted aluminum
Standard on Mojave
(WFT)



**17-inch Dark Grey-painted
machined-face aluminum**
Available on Mojave
(WGD)



17-inch Black-painted aluminum
Standard on Willys
(WFY)

JEEP®
WRANGLER



PAINTS[†]

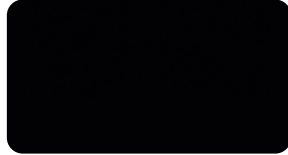
[†]Selections may not be available on all trim levels/models and may be limited/restricted based on availability. [†]Late availability.



Mojito![†] (PGE)



Hydro Blue Pearl (PBJ)



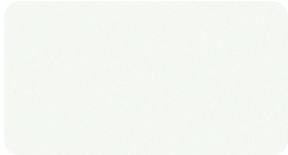
Black (PX8)



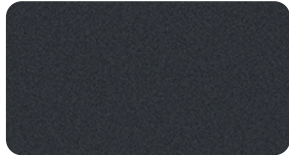
'41 (PJ5)



Reign (PHT)



Bright White (PW7)



Granite Crystal Metallic (PAU)

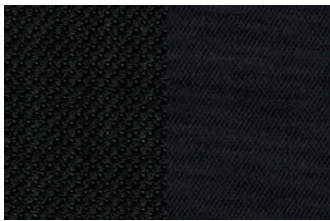


Anvil (PDS)



Firecracker Red (PRC)

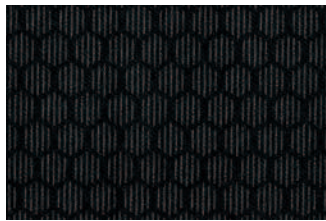
FABRICS



Soul cloth — Black with Mayan Gold accent stitching and Ski Grey Mid-Panel
Standard on Sport, Sport S, Willys and Sahara[®]



McKinley leather-faced — Black with Black Monaco Dash Mid-Panel
Available on Sahara



Soul cloth — Black with Black wrapped Mid-Panel
Standard on Rubicon[®]



Nappa leather-faced — Black with Black wrapped Mid-Panel, embroidered Rubicon logo and Rubicon Red accent stitching
Available on Rubicon



JEEP® WRANGLER
WHEELS



17-inch Black steel-styled
Standard on Sport
(WAA)



17-inch Grey aluminum
Standard on Sport S
(WFD)



**17-inch machined-face
aluminum with Black pockets**
Available on Sport S
(WFH)



**18-inch machined-face
aluminum with Grey spokes**
Standard on Sahara®
(WPA)



**17-inch Black
machined-face aluminum**
Standard on Rubicon®
(WFV)



**18-inch Technical Grey
machined-face aluminum**
Available on Sahara
(WPD)



17-inch Black aluminum
Standard on Willys
(WFY)



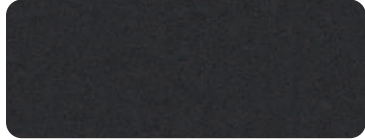
**17-inch machined-faced
aluminum with Black pockets**
Available on Willys and Rubicon
with Xtreme 35-inch
Tire Package
(WF8)

JEEP®
GRAND CHEROKEE /
GRAND CHEROKEE L



PAINTS[†]

[†]Selections may not be available on all trim levels/models and may be limited/restricted based on availability.



Baltic Grey Metallic (PAS)



Copper Shino (PVB)



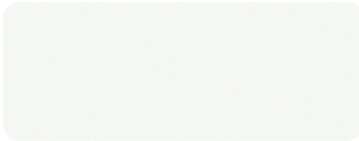
Diamond Black Crystal Pearl (PXJ)



Velvet Red Pearl (PRV)



Silver Zynith (PSE)



Bright White (PW7)



Fathom (PPS)



Steel Blue (PB5)

FABRICS



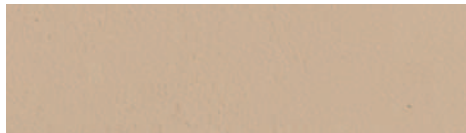
Essence cloth — Black
Standard on Laredo



Capri leatherette and perforated suede — Black with Light Tungsten accent stitching
Standard on Altitude



Capri leatherette — Black with Light Tungsten accent stitching
Standard on Limited



Capri leatherette — Wicker Beige with Light Tungsten accent stitching
Standard on Limited



Ventilated Capri leatherette — Black with Light Tungsten accent stitching
Available on Limited with Luxury Tech Group II



Ventilated Capri leatherette — Wicker Beige with Light Tungsten accent stitching
Available on Limited with Luxury Tech Group II



Ventilated Palermo leather-faced — Black with quilted Palermo leather-faced bolsters and Cognac accent stitching
Standard on Summit



Ventilated Palermo leather-faced — Tupelo with quilted Palermo leather-faced bolsters and Cognac accent stitching
Standard on Summit



JEEP® GRAND CHEROKEE / GRAND CHEROKEE L
WHEELS



17-inch fully painted aluminum
Standard on Laredo Two-Row
(WF5)



18-inch fully painted aluminum
Standard on Laredo Three-Row;
Available on Laredo Two-Row
(WBA)



**20-inch machined-face/
painted aluminum**
Available on Limited
Two-Row/Three-Row
(WHG)



20-inch Gloss Black-painted aluminum
Standard on Altitude
Two-Row/Three-Row;
Available on Limited Two-Row/
Three-Row with Black
Appearance Package
(WHF)



**18-inch polished/
painted aluminum**
Standard on Limited
Two-Row/Three-Row
(WLH)



20-inch Black-painted aluminum
Standard on Limited Reserve
(WHK)



**21-inch polished/
painted aluminum**
Standard on Summit
Two-Row/Three-Row
(WJE)



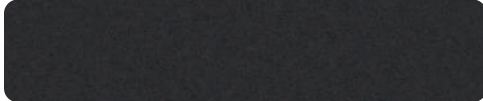
21-inch Black-painted aluminum
Available on Summit with
Obsidian Appearance Package
(WJC)

GRAND WAGONEER

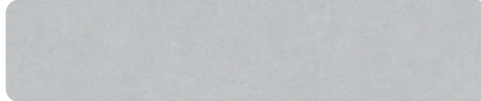


PAINTS[†]

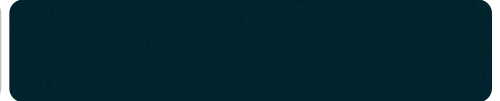
[†]Selections may not be available on all trim levels/models and may be limited/restricted based on availability. [§]Limited edition.



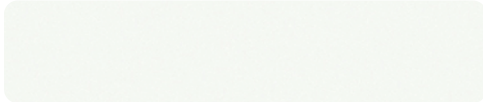
Baltic Grey Metallic (PAS)



Silver Zynith (PSE)



Fathom Blue (PPS)



Bright White (PW7)



Velvet Red Pearl (PRV)



Ghost[§] (PD7)

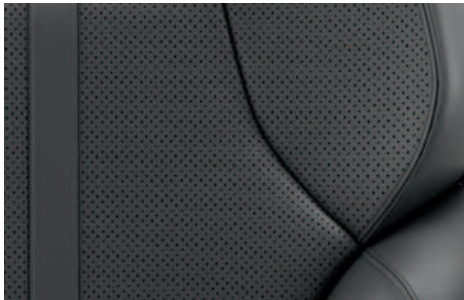


Steel Blue (PB5)



High-Gloss Black (PX8)

GRAND WAGONEER FABRICS



Ventilated Capri leather-faced with Axis II perforations and Global Black/Smoke accent stitching — Global Black

Standard on Grand Wagoneer, Upland, Limited and Limited Reserve



Ventilated Nappa leather-faced with Axis II perforations and Global Black/Smoke dual accent stitching — Global Black

Standard on Summit



Ventilated Palermo leather-faced with quilted registered perforations and Global Black/Burnished Copper accent stitching and Sea Salt piping — Global Black

Standard on Summit Reserve



Ventilated Palermo leather-faced with quilted registered perforations and Tupelo/Burnished Copper accent stitching and Global Black piping — Tupelo/Global Black

Standard on Summit Reserve



GRAND WAGONEER

GRAND WAGONEER WHEELS



18-inch machined-face aluminum with Black Noise pockets
Standard on Grand Wagoneer (WBB)



20-inch machined-face aluminum with Gloss Black pockets
Available with Heavy-Duty Trailer Tow Package (WRE)



20-inch aluminum painted Luster Grey Metallic
Standard on Upland; Available on Limited with Black Appearance Package (WR3)



22-inch Gloss Black-painted aluminum
Available on Limited Reserve with Black Appearance Package (WPH)



22-inch Black Noise-painted aluminum with Gloss Black inserts
Available on Summit and Summit Reserve with Black Appearance Package (WPV)

WAGONEER S



PAINTS[†]

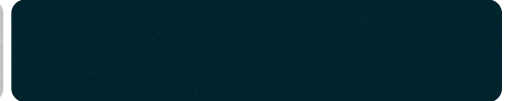
[†]Selections may not be available on all trim levels/models and may be limited/restricted based on availability. [§]Limited edition.



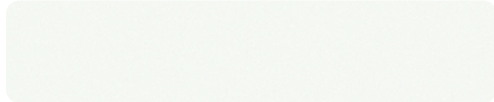
Baltic Grey Metallic (PAS)



Silver Zynith (PSE)



Fathom Blue (PPS)



Bright White (PW7)



Red Hot Pearl (PR6)



Hydro Blue (PBJ)



Diamond Black Crystal Pearl (PX8)

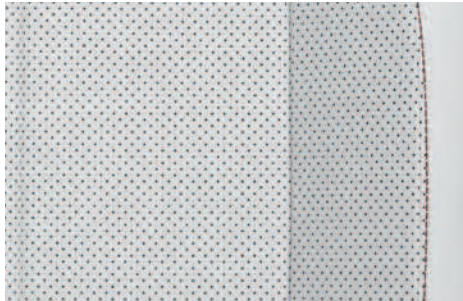


Copper Shino[§] (PVB)

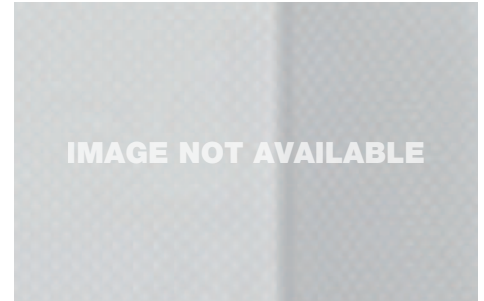
FABRICS



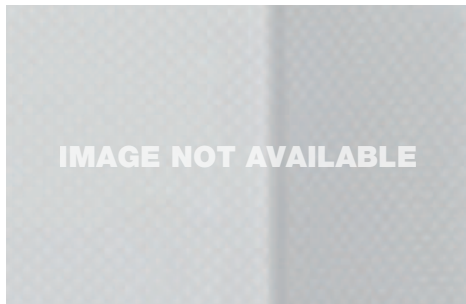
Neo Ultra Lux II with Axis II perforations with Wine accent stitching and Crescent piping — Global Black
Standard on Limited



Neo Ultra Lux II with Axis II perforations with Wine accent stitching and Crescent piping — Global Black/Arctic
Available on Limited



Neo Ultra Lux III with Axis II and Chevron perforations with Blue Agave/Wine dual accent stitching and Rouge piping — Global Black
Standard on Summit



Neo Ultra Lux III with Axis II perforations with Blue Agave/Light Slate Grey dual accent stitching and Frost piping — Black/Radar Red
Available on Summit



WAGONEER S WHEELS



**20-inch machined-face
aluminum with
Black-painted pockets**
Standard on Wagoneer S Limited
(WR3)



**20-inch Ultra
Black-painted aluminum**
Standard on Wagoneer S Limited with
Obsidian Package
(WH7)



**20-inch machined-face
aluminum with
Black-painted pockets**
Standard on Wagoneer S Summit
(WR2)



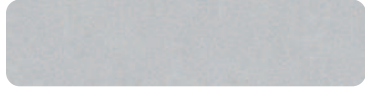
**20-inch Gloss Black-painted
aluminum with Dark Neutral
Grey inserts**
Standard on Wagoneer S Summit with
Obsidian Package
(WPF)

RAM
1500



PAINTS[†]

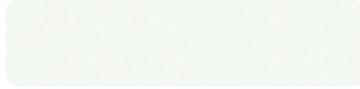
[†]Selections may not be available on all trim levels/models and may be limited/restricted based on availability. [‡]Late/limited availability.



Silver Zynith (PSE)



Diamond Black Crystal Pearl (PXJ)



Bright White (PW7)



Billet Silver Metallic[‡] (PSC)



Ivory Tri-Coat Pearl (PWD)



Granite Crystal Metallic (PAU)



Hydro Blue Pearl (PBJ)



Red Pearl[‡] (PRV)



Forged Blue Metallic (PCG)

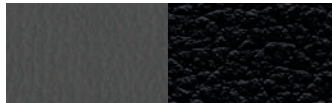


Molten Red (PR6)



Canyon Lake (PJ7)

FABRICS



Vinyl — Diesel Grey/Black with Diesel Grey accent stitching
Standard on Tradesman[®]



Cloth — Black with Medium Greystone accent stitching
Standard on Big Horn[®]



Cloth — Diesel Grey/Black with Diesel Grey accent stitching
Standard on Big Horn



Vinyl with cloth inserts — Black with Medium Greystone accent stitching
Standard on Sport



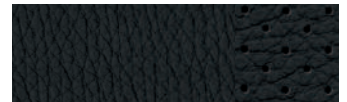
Leather-faced with perforated inserts — Black with Medium Greystone accent stitching
Available on Sport



Leather-faced with perforated inserts — Black with Greystone accent stitching
Available on Sport, Rebel[®] and Laramie[®] with GT Package



Cloth/vinyl — Black/Dark Ruby Red with Medium Greystone/Ruby Red accent stitching and embroidered Rebel logo
Standard on Rebel



Leather-faced with perforated inserts — Black with embroidered Rebel logo
Available on Rebel



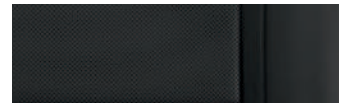
Leather-faced with perforated inserts — Black with Medium Greystone accent stitching
Standard on Laramie



Premium leather-faced with perforated inserts — Filigree/Bison with Cattle Tan accent stitching and piping
Standard on Limited Longhorn[™]



Premium quilted leather-faced bucket — Black/Black
Standard on Limited



Premium quilted leather-faced bucket — Black
Standard on Limited



Premium quilted leather-faced quilted bucket — Ebony Red/Black
Available on Limited



Premium leather-faced with perforated inserts and suede bolsters — Black with Medium Greystone accent stitching and embroidered RHO[®] logo
Standard on RHO



Premium leather-faced with perforated inserts and suede bolsters — Black/Bright Ruby Red with Bright Ruby Red accent stitching and embroidered RHO[®] logo
Available on RHO



Premium quilted leather-faced with perforated inserts — Black
Standard on Tungsten



RAM 1500
WHEELS



18-inch steel
Standard on Tradesman®
(WBF)



18-inch aluminum
Standard on Big Horn®;
Available on Tradesman with
Chrome Appearance Group
(WBB)



**20-inch painted/
polished aluminum**
Standard on Black Express
(WRF)



**18-inch Black-
painted aluminum**
Standard on Warlock
(WBP)



**18-inch Mid-Gloss
Black-painted aluminum**
Standard on Rebel®
(WBL)



**20-inch premium painted/
polished aluminum**
Standard on Laramie®
(WRL)



**22-inch Black-
painted aluminum**
Standard on Sport and Laramie
with Night Edition
(WPH)



**20-inch premium painted/
polished aluminum**
Standard on
Limited Longhorn™
and Limited
(WRM)



**22-inch Black-painted/
polished aluminum**
Available on Limited Longhorn
with monotone paint and Limited
(WPG)



**18-inch Black-
painted aluminum**
Standard on RHO®
(WS4)



**18-inch beadlock-
capable aluminum**
Available on RHO
(WS1)



**20-inch
chrome-clad aluminum**
Available on Big Horn
(WRK)



**20-inch
Black-painted
Black-clad aluminum**
Standard on Sport;
Available on Black Express with
Black Express Package and
Big Horn with Night Edition
(WRN)



**22-inch
Premium Black-
painted aluminum**
Standard on Limited with
Night Edition
(WPD)



**22-inch
painted/polished aluminum
with inserts**
Standard on Tungsten
(WPA)

RAM
2500 / 3500



Properly secure all cargo. Always tow within the vehicle's capacity.

PAINTS[†]

[†]Selections may not be available on all trim levels/models and may be limited/restricted based on availability.



Ceramic Grey Clear Coat (PDN)



Molten Red (PR6)



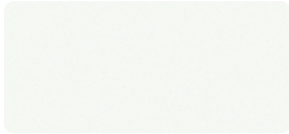
Diamond Black Crystal Pearl (PXJ)



Flame Red (PR4)



Hydro Blue Pearl (PBJ)



Bright White (PW7)



Granite Crystal Metallic (PAU)



Silver Zynith (PSE)



Forged Blue Metallic (PCG)

FABRICS



Heavy-duty vinyl — Diesel Grey/Black
Standard on Tradesman®



Cloth — Black
Standard on Big Horn®;
Available on Tradesman



Cloth with vinyl inserts — Black with Ruby Red accent stitching
Standard on Rebel® and Power Wagon®



Leather-faced with perforated inserts — Black with Medium Greystone accent stitching
Available on Rebel and Power Wagon



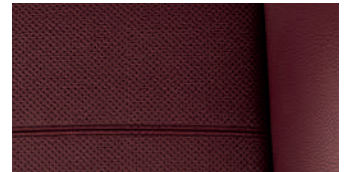
Leather-faced with perforated inserts — Black with Medium Greystone accent stitching
Standard on Laramie®



Leather-faced — Sea Salt/Bison Brown
Standard on Laramie



Premium leather with perforated inserts — Black with Medium Greystone accent stitching and piping
Standard on Limited



Premium leather-faced — Ebony Red/Black
Standard on Limited



RAM 2500 / 3500
SINGLE REAR WHEELS



17-inch painted steel
Standard on 2500 only
(WAA)



18-inch painted steel
Standard on 3500 only
(WBF)



18-inch chrome-clad steel
Standard with Chrome
Appearance Group, Chrome
Appearance A Group,
Tradesman® Level 2 Group and
Tradesman Level 2A
Equipment Group
(WBH)



18-inch polished aluminum
Standard on Big Horn®
(WBE)



**17-inch Black-
painted aluminum**
Standard on Power Wagon®;
Available on Tradesman
Power Wagon Package
(WF2)



18-inch polished aluminum
Standard on Laramie®
(WBC)



20-inch polished aluminum
Standard on Laramie with
Sport Appearance Package
(WRJ)



**20-inch Black-
painted aluminum**
Standard on Black Express,
Big Horn and Laramie
with Night Edition
(WF3)



**20-inch Satin Carbon
aluminum with chrome inserts**
Standard on Limited and
Limited Longhorn™
(WH3)



**20-inch Black-
painted aluminum**
Standard on Limited with
Night Edition
(WHD)



**20-inch Black-painted
Diamond-Cut aluminum**
Standard on Rebel®
and Warlock
and Warlock
(WRD)

DUAL REAR WHEELS



17-inch painted steel
Standard on
3500 Tradesman DRW
(WFG)



17-inch polished aluminum
Standard on 3500 Big Horn,
Laramie, Limited and
Limited Longhorn; Standard
on Tradesman with Chrome
Appearance Group or Tradesman
Level 2A Equipment Group
(WF7)



**17-inch Black-
painted aluminum**
Available on 3500 Big Horn,
Laramie and Limited DRW
with Night Edition
(WFQ)



17-inch chrome-clad steel
Available with Chrome
Appearance A Group
and Tradesman Level 2A
Equipment Group
(WD4)

RAM
3500 / 4500 / 5500
CHASSIS CAB



Properly secure all cargo. Always tow within the vehicle's capacity.

PAINTS[†]

[†]Selections may not be available on all trim levels/models and may be limited/restricted based on availability.



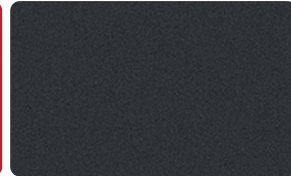
Molten Red (PR6)



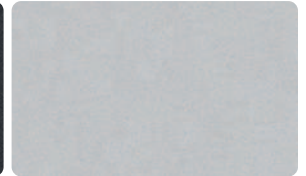
Diamond Black Crystal Pearl (PXJ)



Flame Red (PR4)



Granite Crystal Metallic (PAU)



Silver Zynith (PSE)



Forged Blue Metallic (PCG)

SPECIALTY PAINTS^{†§}

[§]Available on Ram 1500, Heavy Duty and Chassis Cab (select trim levels). Minimum order required.



Light Green (PGC)



Omaha Orange (P62)



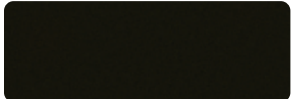
School Bus Yellow (PL1)



Tree Green (P73)



Bright Green (P68)



Dark Brown (P18)



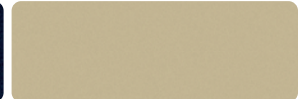
Bright Red (P12)



Holland Blue (P72)



Midnight Blue Pearl (PB8)



Power Tan (P81)



Timberline Green Pearl (PGW)



Yellow (P63)



Detonator Yellow (PYB)



Light Cream (P64)



National Safety Yellow (P74)



Agriculture Red (P61)



Construction Yellow (P71)



Green Angel (P06)



Robin Egg Blue (P69)



Black (PX8)



Patriot Blue Pearl (PPX)



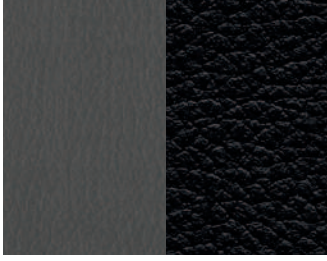
Utility Orange (P83)



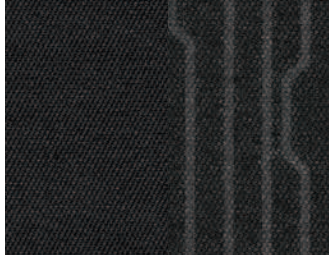
Republic Blue (P49)

RAM 3500 / 4500 / 5500 CHASSIS CAB

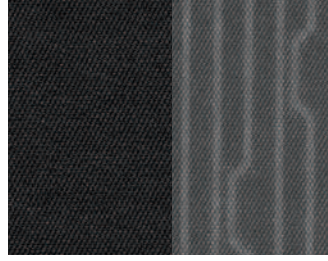
FABRICS



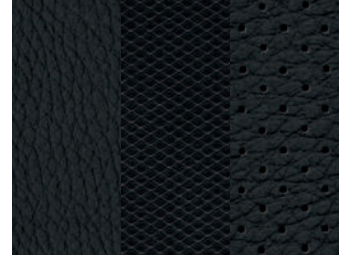
Vinyl — Diesel Grey/Black with Diesel Grey accent stitching
Standard on Tradesman®;
Available on Big Horn®



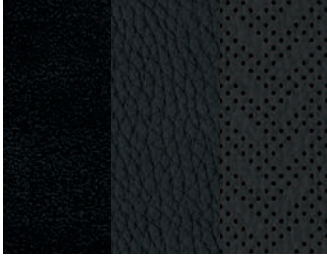
Cloth — Black with Medium Greystone accent stitching
Standard on Big Horn;
Available on Tradesman



Cloth — Diesel Grey/Black with Diesel Grey accent stitching
Standard on Big Horn;
Available on Tradesman



Leather-faced with perforated inserts — Black
Available on Big Horn



Leather-faced with perforated inserts — Black with Medium Greystone accent stitching
Standard on Laramie®;
Available with Laramie Trim Group

WHEELS



18-inch painted steel
Standard on 3500 Tradesman SRW (WBF)



18-inch chrome-clad steel
Standard on 3500 Big Horn SRW; Standard on 3500 Tradesman SRW with Chrome Appearance Group (WBE)



18-inch polished aluminum
Standard on Laramie and Limited Trim Group (WBC)



17-inch Black-painted steel
Available on 3500 Tradesman DRW (WFG)



17-inch chrome-clad steel
Standard on 3500 Big Horn; Standard on 3500 Tradesman DRW with Chrome Appearance Group (WD4)



17-inch polished aluminum
Standard on Laramie and Limited Trim Group (WF7)



19.5-inch painted steel
Standard on 4500 / 5500 (WP3)



19.5-inch Black-painted steel
Available on 4500 / 5500 Tradesman (WPJ)



19.5-inch polished aluminum
Standard on 4500 / 5500 Laramie and Limited; Available on 4500 / 5500 Tradesman and Big Horn (WP4)



Properly secure all cargo.

PAINTS[†]

[†]Selections may not be available on all trim levels/models and may be limited/restricted based on availability.



Flame Red (PR4)



Granite Crystal Metallic (PAU)



Black (PX8)



Sandstone Pearl (PFS)



Deep Cherry Red Crystal Pearl (PRP)



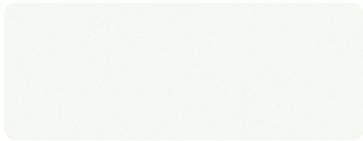
Ceramic Grey Clear Coat (PDN)



Forged Blue Metallic (PCG)



Bright Silver Metallic (PS2)



Bright White (PW7)

FABRICS



Cloth — Black
Standard



Vinyl — Black
Available



Leather-faced — Black
Available



RAM PROMASTER® WHEELS



16-inch steel
Standard
(WCS)



16-inch Black steel
Available
(WDL)



16-inch Silver-painted aluminum
Available
(WJR)



**16-inch machined-face
aluminum with Black-
painted pockets**
Available
(WNY)



16-inch Black-painted aluminum
Available with Black
Appearance Package
(WNA)



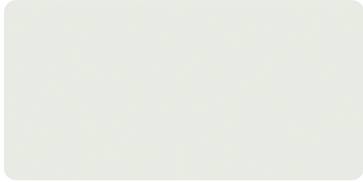
16-inch White-painted steel
Available
(WDW)

FIAT®
500e



PAINTS†

†Selections may not be available on all trim levels/models and may be limited/restricted based on availability.



Glacier White (PZ2)



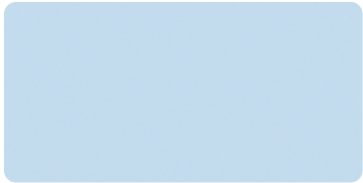
Tuxedo Black (PXN)



Red by (RED) (PRF)



Rose Gold Metallic (PM1)



Marine Layer Mist (PW4)



Ocean Green (PP3)



Tennis Ball (PJD)



Green Metallic (PG1)



Greige Metallic (PD2)

FABRICS



Cloth — Black bucket with “FIAT” monogramming and Red accents
Standard on 500e POP



Vegan leather-faced — Beige with “FIAT” monogramming
Available on 500e with Icona Package

At time of publishing this information is correct and is subject to change once the 2026 information becomes available.



FIAT® 500e
WHEEL



17-inch multi-spoke aluminum
Standard on 500e POP and Icona
(WAG)

CHRYSLER



chrysler.ca

DODGE



dodge.ca

Jeep®

jeep.ca



RAM

ramtruck.ca

FIAT

fiatcanada.com

©2025 FCA Canada Inc. All Rights Reserved. Chrysler, Dodge, Jeep, Ram, HEMI, Grand Wagoneer, Wagoneer S, the Chrysler wing design, Grand Caravan, Pacifica, the Jeep grille, Altitude, Compass, Gladiator, Grand Cherokee, High Altitude, Laredo, Limited, Mojave, Rubicon, Sahara, Summit, Trailhawk, Trail Rated, Willys, Wrangler, the crosshair grille, Blacktop, Charger, Charger Daytona, Durango, R/T, Scat Pack, SRT, SRT Hellcat, SXT, the Ram's Head logo, Big Horn, Laramie, Power Wagon, Ram ProMaster, Rebel, RHO, Tradesman, Tungsten and Warlock are registered trademarks, and Limited Longhorn and Pinnacle are trademarks of FCA US LLC. FIAT and 500e are registered trademarks of FCA Group Marketing S.p.A., used under licence by FCA US LLC.

Amazon, Amazon Fire TV, Alexa, and all related logos and marks are trademarks of Amazon.com, Inc. or its affiliates.

All product illustrations and specifications are based upon current information at the time of publication approval. Although descriptions are believed correct, complete accuracy cannot be guaranteed. FCA Canada Inc. reserves the right to make changes at any time, without notice or obligation, in prices, specifications, equipment, colours and materials, and to change or discontinue models.